



# MONTHLY MEMBERSHIP PROGRESS REPORT

District 2 X3

Results as of: 01/31/2018

GMT: JOE AL PICONE

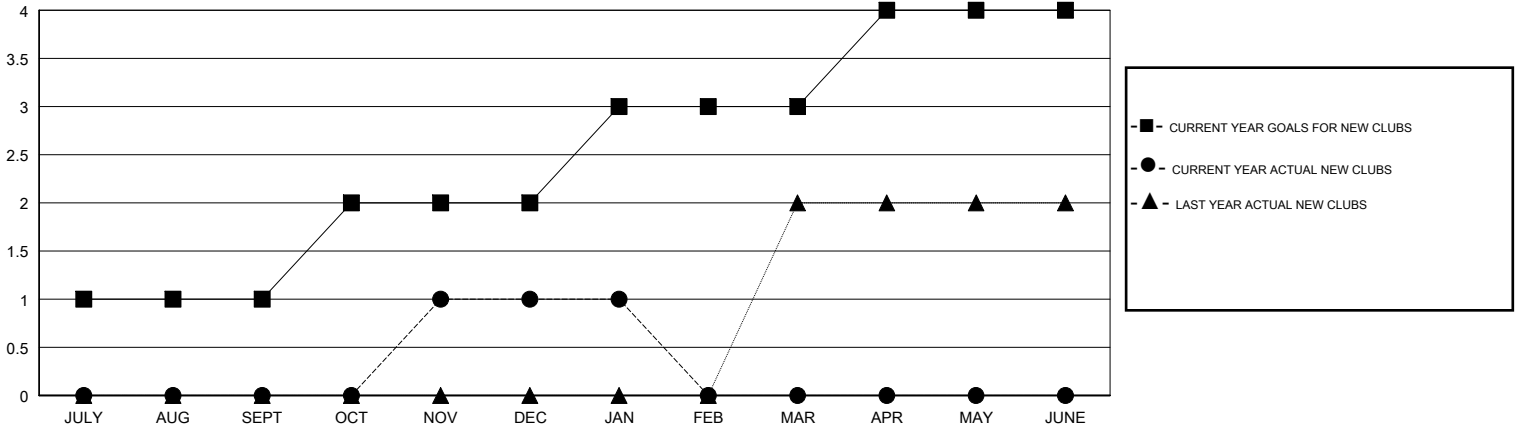
LOCATION TEXAS

GMT CA

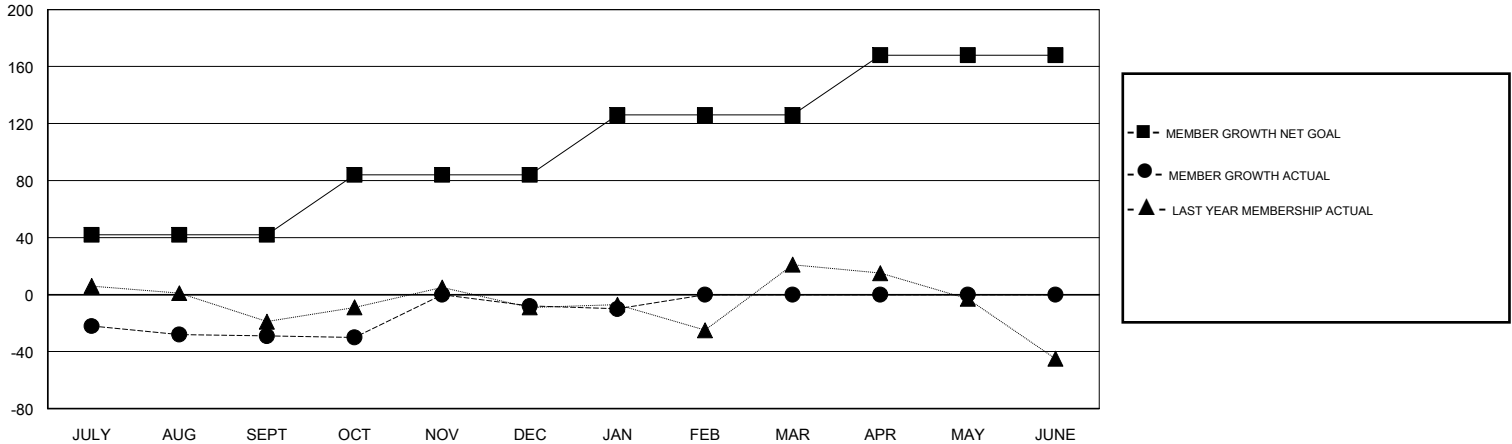
Clubs			
RESULTS FOR 2017-2018			
QUARTER	NEW CLUB GOAL	NEW CLUBS	DROPPED CLUBS
JULY/AUG/SEPT	1	0	3
OCT/NOV/DEC	1	1	0
JAN/FEB/MAR	1	0	0
APR/MAY/JUNE	1	0	0

Members			
RESULTS FOR 2017-2018			
QUARTER	MEMBER GROWTH NET GOAL	MEMBER GROWTH ACTUAL	DROPPED MEMBERS ACTUAL (including transfers)
JULY/AUG/SEPT	42	37	58
OCT/NOV/DEC	42	75	54
JAN/FEB/MAR	42	15	15
APR/MAY/JUNE	42	0	0

GOALS AND ACTUAL NEW CLUBS CUMULATIVE



GOALS AND ACTUAL MEMBERS CUMULATIVE



DROPPED CLUBS: 3

31 CLUBS OF 56 ADDED 1 OR MORE NEW MEMBERS

GENDER DISTRIBUTION

MALE 1,008 (66.14%)  
 FEMALE 516 (33.86%)  
 Women Percentage Fiscal Year Goal: 40%

DROPPED MEMBERS

DECEASED	12
CLUB CANCELLED	0
OTHER	115
<b>TOTAL</b>	<b>127</b>

[CLICK HERE FOR CUMULATIVE MEMBERSHIP DATA](#)

TOTAL FAMILY UNIT MEMBERS	184
FAMILY MEMBERS PAYING HALF DUES	93